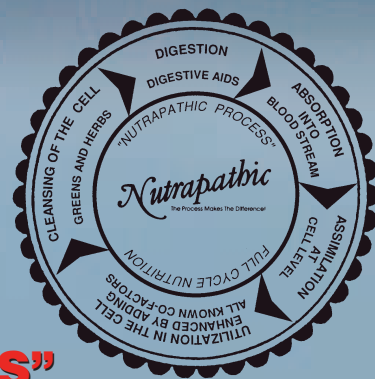


Nutrapathic®



“NUTRAPATHIC PROCESS”

Nutrapathic supplements are a combination of the oldest concepts of nutrition and today’s latest technology. Our unique formulas are the most effective products on the market today due to a combination of four innovative features that produce “FULL CYCLE NUTRITION”

“Nutrapathic Process”

**Complete System Support
Contains All Co-factors
Base of Whole Foods**

The “Nutrapathic Process” is a new and scientifically sound process of blending and combining tablet ingredients not used by any other manufacturer or lab in the world! This method powers the ingredients to go beyond the old fashioned supplement limits and work far more efficiently than ever before. The process combines micronized nutrients and standard nutrients into one tablet. Through special “rapid release” technology, the micro-nutrients are released first. These micro-nutrients alert and pre-activate all the body’s systems associated with digestion, absorption, assimilation, utilization and elimination. The alerted and activated systems are now ready and waiting for the core nutrients. The end results of this exciting process gives your body the highest possible utilization and the most efficient metabolism of valuable nutrients in both the tablet and your food.

CONTAINS ALL CO-FACTORS

Co-factors are nutrients that help other nutrients work. In general, it is necessary for that co-factor to be present for the other factor to be active. Nutrapathic formulas include greens and herbs, plus specific vitamins and minerals as co-factors, greatly improving the effectiveness of the formula - creating a synergistic effect.

COMPLETE SYSTEM SUPPORT

Each gland or organ is part of a complete system. It is necessary to nourish the entire system - not just one part - in order to bring the body back into balance. All Nutrapathic formulas are designed to provide support to all known areas of the body that work in conjunction with, or support that system, allowing the body to bring itself back into balance as a whole - a state of normalcy and balance.



BASE OF WHOLE FOODS

Most of our formulas are in a base of greens, such as rye, barley, alfalfa and spirulina. All are high in trace minerals, protein, fatty acids, enzymes and chlorophyll. The addition of these greens help to make Nutrapathic formulas “whole foods”.

THE NUTRAPATHIC INGREDIENTS

VITAMINS & MINERALS: All of our products contain only the finest quality vitamins and minerals. Used for the specific purpose of each formula or as co-factors for peak digestion, absorption and maximum utilization, these vitamins and minerals are essential to our synergistic formulas.

AMINO ACIDS: These are the smallest molecules of protein. Referred to as building blocks of protein, amino acids comprise over three-quarters of the body’s solid weight. They build and maintain all body tissues and constitute an important part of enzymes, hormones and body fluids. They are responsible for regulating body function, such as growth and digestion, and help form antibodies which fight infection.

HERBS: “Mother Nature’s Pharmacy” – Herbs provide special trace elements not found in our daily diet. These elements round out the nutritional balance of Nutrapathic products and increase the main ingredients’ effectiveness. Many herbs are known to have a healing effect on the body and have been used for thousands of years.

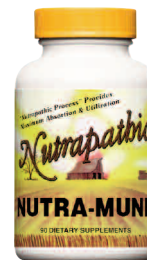
DIGESTIVE ENZYMES: Each of our formulas contain specific digestive enzymes to provide optimum digestion and assimilation. Specific acids and enzymes are used to maximize the digestion of each formula’s core ingredients. Many vitamin and mineral deficiencies result not from the lack of these nutrients, but from the body’s inability to digest them. Nutrapathic supplements contain only the highest quality ingredients with all the co-factors and trace elements inherent to those nutrients.

“The Candida Combo”

D-YEAST & NUTRA-MUNE

No Strict Diet Change! No Adverse Side Effects!

Only 3 Tablets Each Per Day



WHAT IS CANDIDA ALBICANS? Candida albicans is a harmless single-cell fungus that is naturally present in the body and on the skin. But this usually benign organism can run rampant, especially when drugs like antibiotics, cortisone, or birth control pills are used. When candida albicans proliferates out of control, the most commonly diagnosed manifestation is a yeast infection.

PASSING IT ON: If you are a woman suffering from a yeast infection, your doctor will probably call it vaginitis. Although candida is harder to detect in a man's body, men are also subject to yeast infections. In fact, when one partner is infected, a sexually-mated couple can pass the organism back and forth until it is effectively controlled.

CANDIDA CONTROL IS AUTOMATIC – If you are healthy and your body is in the correct chemical balance internally (homeostasis), the growth of candida is held in check. Because your body runs very efficiently “on automatic”, you're seldom aware it's there. Candida is kept in balance and remains just another one of the many organisms which live within the body. However, when the natural balance is disturbed, candida multiplies rapidly (on the mucus membranes) and can take over the entire body in months.

WHAT CAUSES A CANDIDA IMBALANCE? Our bodies are programmed to defend selectively against foreign invaders (harmful bacteria, viruses, infection). Our defense systems are also programmed to shelter friendly bacteria needed for many internal functions, as well as to prevent overgrowth of benign bacteria, such as candida. But our defenses can be overwhelmed. When we consume meat and poultry raised commercially, we often ingest antibiotics and growth hormones, such as steroids. Our internal defenses are weakened still further by stress, chemicals in the food chain, contaminants in water, environmental pollution, poor nutrition, and drug or alcohol abuse.

ON THE ATTACK: When our bodies are kept too busy defending against all these foreign agents, that's when candida seizes the advantage, attacks, and rockets out of control. Many physicians and consumers were not aware of how big a problem this can be until such doctors as Dr. William Crook published “The Yeast Connection” and Dr. Orion Truss published “The Missing Diagnosis”.

CANDIDA ON A RAMPAGE: When our battered and exhausted defenses are forced to ignore candida in favor of cleansing our internal systems of contaminants, this normally inoffensive little organism goes on the attack. As the colony builds strength, it can release foreign substances (toxins), which can travel throughout the body.

UNDERCOVER AND IN DISGUISE: These toxins can cause a surprising variety of physical reactions. This single-cell yeast organism “hides out” and adopts a disguise, wreaking havoc while managing to avoid suspicion. Many of us who suffer from chronic headaches, unexplained fatigue — even depression, may be victims of candida whose condition has not been correctly diagnosed. Incredible as it may seem, candida albicans can mimic the symptoms of over 140 different disorders. If you suffer from any of the following most common symptoms, you may be an unsuspecting victim of a candida albicans attack.

SIGNS OF POSSIBLE CANDIDA ALBICANS INFECTION

- Allergies
- Headaches
- Depression
- Cramping
- Ear Infections
- Lethargy
- Hives
- Food Cravings
- Constipation
- Vaginitis
- Psoriasis
- Cystitis
- Diarrhea
- Hypoglycemia
- Bladder Infections
- Memory Loss
- Irritability
- Endometriosis
- Throat Infections
- Muscle Weakness
- Bloating
- Kidney Infections
- Nervousness
- Asthma
- Lost Sex Drive
- Inability to Concentrate
- Fatigue
- Hay Fever
- Sinusitis
- Prostatitis
- Joint Pains
- Cold Hands/Feet
- Urethritis
- Gastritis
- Eczema
- Numbness/Tingling
- Chronic Heartburn
- Menstrual Problems

THE NUTRAPATHIC TWO-STEP SOLUTION TO CANDIDA:

NUTRA-MUNE

Step One: RESTORING BALANCE In our modern world, the hard working, ever-vigilant internal defense systems of the body usually require nutritional support, but even more so when the body is weakened by an overload of candida albicans. Chemical preservatives in food and water, environmental pollution, poor nutrition, drug and alcohol abuse, and stress can weaken the body's defenses. **NUTRA-MUNE** is a synergistic combination of vitamins, minerals, amino acids, glandulars, herbs and digestive enzymes that are bio-available in the body, enhancing the body's natural ability to control foreign invaders such as bacteria, viruses, infections and fungus. The overloaded internal systems, organs, tissues, and cells of the body must be properly nourished to restore the correct internal balance, thereby encouraging the rebuilding and strengthening of our weakened defenses.

D-YEAST

Step Two: RESTORING CONTROL – The candida overgrowth must be brought down to a normal level so that the organism can be managed by the internal systems responsible for overseeing its control. **D-YEAST** works to bring candida proliferation back to normal, harmless levels. Unlike other products that only work in the colon, **D-YEAST** is designed to work throughout the colon, bloodstream, and the entire body. Ordinary formulas can cause massive die-off of candida in the colon, rushing toxins into the bloodstream – resulting in headaches, nausea, sickness, fatigue or worse. **D-YEAST** works with the body – not against it – in the overkill mode.

Nutrapathic's two-part nutritional approach to candida albicans is so safe and effective that many prestigious health care professionals and support groups all over the world recommend this program.

NUTRA-MUNE EACH TABLET CONTAINS: Vitamin A (as Beta-Carotene & Acetate) 5000 IU, Vitamin C (as ascorbic acid) 500 mg, Vitamin B12 (as cyanocobalamin) 50 mcg, Biotin 300 mcg, Pantothenic Acid (as calcium pantothenate) 7 mg, Calcium (as carbonate) 40 mg, Magnesium (as oxide) 20 mg.

IN A 515 mg PROPRIETARY BLEND OF: L-Lysine (HCL), Echinacea Purpurea (root), Spirulina (algae), Bromelain (fruit), Lemon Bioflavonoids, Barley Grass, Alfalfa (leaf), Wheat Greens, Thymus, Ribonucleic Acid, Papain, Irish Moss (herb), Rice Bran, Rutin, Adrenal, Pituitary, Spleen, Lymphatic, Liver.

D-YEAST A 641 mg PROPRIETARY BLEND OF: Carrot Lactobacillus Acidophilus, Sodium Caprylate, Sesame (seed), Garlic Extract (clove), L-Glutamic Acid, Psyllium Husk (seed), Pau D'Arco (bark), Guar Gum, Aloe Vera, powdered FD (leaf).

D-Yeast and Nutra-Mune Should Be Taken Together For Candida Symptoms

It is most important to get adequate nutrition to rebuild the body back to its normal state of wellness. Our **MULTIPLE “PLUS”** is very beneficial for this purpose, and can be taken at the same time as the **D-YEAST** and **NUTRA-MUNE**. It is very rare to have any “die-off” symptoms, however, should that occur, merely reduce the dosage of the **D-YEAST** for a week or so, then gradually build back up to three daily. Keep in mind that candida albicans takes a long time to make a person ill, and it usually takes at least 6 months to get it under complete control even though you may feel better. It is helpful to continue taking the **MULTIPLE “PLUS”** as a maintenance program to assure good nutritional support and maintain good health!



MULTIPLE "PLUS"

*With 87 Vitamins, Minerals, Herbs,
Whole Foods, Amino Acids & Enzymes*



Revitalize and rejuvenate your body and enhance muscle tone! More than a multiple – it's a complete nutritional system that provides significant levels of every nutrient required for abundant health. Because our bodies do not store nutrients, we need to replenish the supply throughout the day. By taking **Nutrapathic Multiple "Plus"** you are ensuring that the nutrients your body needs will be there when it needs them.

ALL THE VITAMINS AND MINERALS – with Molybdenum and sulfur, and two forms of calcium which is not found in most multiple vitamin products. **SIX DIGESTIVE ENZYMES** – to help digest the tablet and your food. **ALL 18 AMINO ACIDS** – the build-

ing blocks of protein, amino acids comprise over 3/4 of the body's solid weight and constitute an important part of enzymes, hormones and body fluids. **SEVEN WHOLE FOODS (ALL GREENS)** – high in trace minerals, protein, fatty acids, enzymes and chlorophyll. **FOUR SPECIAL FOOD SOURCES** – rice polishings supply the bulk of B vitamins, collagen is the protein that forms the connective tissues of the body. Bee pollen is one of the richest whole foods, and egg lecithin supplies lipids and fatty acids. **EIGHT HERBS** – to supply special trace nutrients not found in our diet, plus help cleanse the cells and promote elimination of used nutrients.

**All The Right Nutrients!
All The Right Quantities!
All In The Right Forms!**

EACH TABLET CONTAINS: Vitamin A (as beta carotene) 1250 IU, Vitamin C (as ascorbic acid) 125 mg, Vitamin D (as cholecalciferol) 100 IU, Vitamin E (as d-alpha tocopherol) 25 IU, Vitamin B1 (as thiamine HCL) 5 mg, Vitamin B2 (as riboflavin) 5 mg, Niacin (as niacinamide) 7.5 mg, Vitamin B6 (as pyridoxine HCL) 5 mg, Folic Acid 75 mcg, Vitamin B12 (as cyanocobalamin) 15 mcg, Biotin 55 mcg, Pantothenic Acid (as calcium pantothenate) 7.5 mg, Calcium (as egg shell and oyster shell) 56 mg, Phosphorus (as amino acid chelate) 52.5 mg, Iodine (from kelp) 50 mcg, Magnesium (as oxide) 68.75 mg, Zinc (as sulfate) 8.75 mg, Selenium (as amino acid chelate) 12.5 mcg, Copper (as gluconate) 0.5 mg, Manganese (as sulfate) 5 mg, Chromium (as amino acid chelate) 5 mcg, Molybdenum (as amino acid chelate) 25 mcg, Potassium (as gluconate) 18.75 mg.

IN A 400 mg PROPRIETARY BLEND OF: Lecithin, Choline (as bitartrate), Amino Acid Blend, Inositol, Sulfur, Paba, Lemon Bioflavonoid Complex, Rye Greens, Trace Mineral Blend, American Ginseng (root), Spirulina, Rutin, Pancreatin 4X, Glutamic Acid, Irish Moss, Alfalfa (leaves), Hesperidin Complex, Egg Lecithin, Collagen, Barley Greens, Pepsin, Papain, Bee Pollen, Ox Bile (powdered), Liver, Red Clover (blossom), Dandelion (root), Gotu Kola (herb), Fo Ti-Tieng (root), Echinacea Purpurea (root), Rice Bran Polishings, Peppermint (leaves), Bromelain, Kelp, Wheat Greens, Adrenal Gland, Kidney, Heart, Lung, Thymus, Spleen.



YOUTH FORMULA

Whole Food Multiple

Enjoy Youthful Energy & Vitality! Are you tired, sluggish, overweight, or lacking in natural energy? Do you look and feel older every day? You will feel the difference when you allow the special nutrients in **YOUTH FORMULA** to help restore your youthful energy and vitality!

Nutrapathic YOUTH FORMULA capsules contain a wealth of nutrients that play a key role in supporting energy and promoting general well being. It includes kelp, which contains more vitamins and minerals than any other food, especially B-complex vitamins. Kelp provides vitamins A, C, E and K, 30 minerals, amino acids, protein and carbohydrates. Whey also plays a major role in the super energizing formula by supplying complete, easy to digest protein and 17 amino acids. Green foods are an integral part of this invigorating formula. The cruciferous vegetables in the vitamins A, C, folic acid, phosphorus, potassium, calcium, magnesium and selenium. Wheat grass helps stimulate circulation, promotes a healthy liver and provides enzymes. Lycium (wolfberry) is included to stimulate muscle tone and to promote healthy glucose metabolism. The supplement for everyone! Specially designed for the children or adults who cannot swallow pills or adults who do not get proper nutrition or just want to feel younger. This formula can be taken in capsule form or the contents of the capsules may be mixed into juice. The natural cherry flavor makes it pleasant to drink. This unique formula contains nutrients in their organic state from plants, all which are easily digested and utilized by the body.



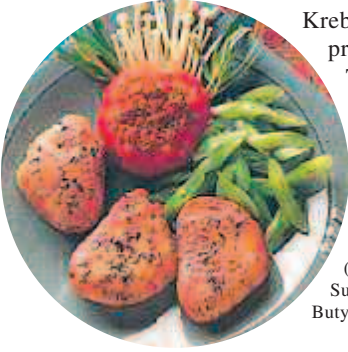
**Capsules That Can Be
Mixed In Juice!**

Nutrapathic YOUTH FORMULA is an easy to digest and assimilate nutritional package of naturally occurring amino acids, vitamins, minerals, trace minerals, fatty acids, chlorophyll, enzymes, carbohydrates and fiber.

A 492 mg PROPRIETARY BLEND OF: Whey, Aloe Vera FD powdered Extract (leaf), Banana (fruit), Wheat Grass (herb), Cruciferous Blend, extract (stems and flowers), Date (fruit), Kelp (leaf), Lycium (berry).

DIGEST-ALL

Gas Bloating Indigestion



You are what you eat! Low energy, allergies, headaches and premature aging may be associated with nutritional imbalances due to poor digestion. Proper digestion eliminates most colon problems - including gas, bloating and toxins being re-absorbed into the bloodstream through the lining of the colon. The average diet that consists mainly of fat, sugar, processed foods and few fresh, raw fruits and vegetables - which are a natural source of enzymes and co-enzymes - over-stresses and under-nourishes the digestive system, creating nutritional imbalances.

Nutrapathic DIGEST-ALL is a blend of enzymes, co-enzymes and the specific nutrients which are essential for the systems of the body that are involved with digestion - including the Krebs cycle, which is the part of metabolism which produces energy from carbohydrates, protein and fats in the body. It also contains vitamins, minerals, amino acids, glandulars, and herbs - including *Tinospora Cordifolia* and *Indian Gentian* - two of the chief herbs from India used to promote good digestion, absorption and assimilation.

EACH TABLET CONTAINS: Vitamin K 40 mcg, Vitamin B6 (as Pyridoxine HCL) 3 mg, Folic Acid 250 mcg, Vitamin B12 (as cyanocobalamin) 5 mcg, Biotin 3.5 mcg, Pantothenic Acid (as Calcium Pantothenate) 62.5 mg, Phosphorus 28 mg, Magnesium (as Aspartate) 7.5 mg, Selenium (as chelate) 50 mcg, Potassium (as Gluconate) 10 mg.

IN A 259 mg PROPRIETARY BLEND OF: Pancreatin 4X, Inositol, *Tinospora Cordifolia*, powdered (herb), *Gentian* (root), Licorice (root), Pancreas, L-Glutamic Acid (HCL), Choline (as bitartrate), Spleen, Lavender (flower), Gastric Mucin, Rutin, L-Arginine, Duodenal Substance, Liver FD, L-Glutathione, L-Isoleucine, Alpha Ketoglutaric Acid, *Nigella Sativa* Seed, Citric Acid, Calcium Pyruvate, Sodium Butyrate, CoQ10, Adenosine Triphosphate.



PURE & REGULAR

Internal cleansing is an essential part of a total health program. **Nutrapathic PURE & REGULAR** is a special blend of nutrients designed to cleanse the entire body quickly, without a special diet or fast. It helps to remove toxins from the blood stream and cells, including heavy metals, medication residues, free radicals, and toxins caused by polluted air, contaminated water, and chemicals present in our food.

Nutrapathic PURE & REGULAR is the first antioxidant and whole body detoxifier to activate all of the detoxifying systems of the body- including the colon, liver, kidneys, lungs and skin at one time by returning them to maximum function and in total balance. Regularity then becomes a normal function. Because it activates instead of purging the systems, people do not experience nausea, diarrhea, headaches, or loss of energy.

No Fasting or Special Diet Necessary

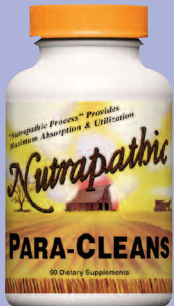
EACH TABLET CONTAINS: Vitamin A (as acetate) 1000 IU, Vitamin C (as ascorbic acid) 250 mg, Vitamin E (d-alpha tocopherol) 20 IU, Niacin (as Niacinamide) 10 mg, Magnesium (as magnesium oxide) 25 mg, Selenium (as amino acid chelate) 10 mcg, Potassium (chloride) 25 mg.

IN A 309 mg PROPRIETARY BLEND OF: L-Cysteine HCL, Licorice (root), Red Clover (blossom), Activated Charcoal, Choline (as Bitartrate), DL-Methionine, Sarsaparilla (root), Irish Moss (herb), Lemon Bioflavonoids, Echinacea (root), Kelp (leaf), Bromelain (fruit), Burdock (root), Wheat Greens, Spirulina, Barberry (bark), *Stillingia* (root), Prickly Ash (bark), Buckthorn (bark), Liver, Papain, *Cascara Sagrada* (bark), Chlorophyll.

Whole Body Detoxifier



PARA-CLEANS



Parasite infestation is on the rise! The evidence of parasites has become more prevalent recently from consuming contaminated food or water in, or especially from foreign countries. Now they are found in many of our own cities' water supplies.

Internally parasites can live in any part of the body, occupying the digestive tract or body cavities - or living within organs, blood, tissue, and even cells. They can cause a multitude of symptoms including headaches, diarrhea, high fevers and weakness. Many people who suffer with *Candida* also have parasites.

Nutrapathic PARA-CLEANS creates an environment that is conducive to the growth of friendly organisms such as acidophilus, but is an unfriendly environment for parasites.

Nutrapathic PARA-CLEANS is a blend of two Ayurvedic herbs which have been used for centuries to prevent and eliminate parasites: *Embelia Ribes* for existing problems, and *Citrus Aurantium* for prevention. To accelerate the effects and long term results, use with **Nutrapathic Nutra-Mune**-which is designed to nourish the body's natural defense system that keeps parasites under control.

A 275 mg PROPRIETARY BLEND OF: *Citrus Aurantium* Extract (peel), *Embelia Ribes* Extract (berries).



Gentle
Safe
Effective



BRAIN ALERT

Not Just A Memory Formula!

The brain is the most complex, multi-function organ in the body and provides us with conscious thought, memory, alertness and communication. **Nutrapathic BRAIN ALERT** is a synergistic combination of nutrients designed to cleanse and nourish the brain, brain stem, spinal cord and nerve tissues. This immensely important network must communicate efficiently to insure clear, alert thinking and retain memory function, creativity, focus, balance, coordination and quick reflexes. Nutrapathic supplies the right nourishment to help this vital organ work optimally.

You will notice better memory, more alertness and thinking much more clearly!



**Memory
Alertness
Clear Thinking**

EACH TABLET CONTAINS: Thiamin (as thiamin hcl) 5 mg, Niacin 5 mg, Niacin (as niacinamide) 5 mg, Vitamin B6 (as pyridoxine hcl) 10 mg, Vitamin B12 (as cyanocobalamin) 20 mcg, Biotin (as d-biotin) 15 mcg, Calcium (as bone meal) 10 mg, Phosphorus 10 mg, Magnesium (as amino acid chelate) 5 mg, Zinc (as sulfate) 10 mg, Selenium (as yeast) 5 mcg, Copper (as gluconate) 2 mg, Manganese (as amino acid chelate) 3 mg, Potassium (as chloride) 5 mg.

IN A 315 mg PROPRIETARY BLEND OF: Brain, Egg Lecithin, Rye Greens (herb), Red Clover (flower), L-Tyrosine, Peppermint (leaf), PABA, Lecithin, L-Glutamic Acid, Gotu Kola (herb), Ginkgo Biloba (leaf), Bee Pollen, L-Arginine, Choline (as choline bitartrate), Barley Greens (herb), L-Glutamine, Eleuthero (root), Spirulina, Valerian (root), Wood Betony (root), Hypothalamus, DNA, L-Phenylalanine, RNA, Pituitary, Bupleurum (root), Horsetail Extract (herb), Chondroitin Sulfate, Safflower Oil, CoQ10.

STRESS FREE

You'll Feel Calm, Relaxed and In Control!

Don't fight stress! Relax, release it, and rebuild with **Nutrapathic STRESS FREE!** This breakthrough formula is powered with an herbal blend designed to release stress, reduce anxiety, and remove tension, plus specific nutritional support to re-nourish and re-balance all the systems effected by mental, physical and emotional stress.



The body's autonomic nervous system is involved with our response to stress. It operates involuntarily, outside our conscious control. The autonomic nervous system is divided into two inter-connected branches: the sympathetic nervous system, which arouses the body; and the parasympathetic nervous system, which quiets the body. When a stressor stimulates the brain, the sympathetic system sends messages to our glands, organs and tissues to arouse them, preparing them for action. Most products available today attempt to suppress the sympathetic system. **STRESS FREE** is designed to nourish the parasympathetic system, allowing you to stay alert, while being able to remain calm.

So with **STRESS FREE** you'll feel calm, relaxed, alert, and in control – without that dull, drowsy or limp feeling. All of this is accomplished the natural way with vitamins, minerals, amino acids, glandulars, herbs and digestive enzymes.



**Release Stress
Reduce Anxiety
Remove Tension**

EACH TABLET CONTAINS: Vitamin C (as ascorbic acid) 25 mg, Vitamin E (d-alpha tocopherol) 16.67 IU, Folic Acid 66.7 mcg, Thiamin (as thiamin mononitrate) 5 mg, Riboflavin 3.3 mg, Niacin (as niacinamide) 26.67 mg, Vitamin B6 (pyridoxine HCL) 2 mg, Vitamin B12 (as cyanocobalamin) 5 mcg, Biotin 25 mcg, Pantothenic Acid (as calcium pantothenate) 20 mg, Calcium (lactate) 33.3 mg, Iron (as amino acid chelate) 1.5 mg, Magnesium (as carbonate) 66.7 mg, Zinc (chelate) 6.67 mg, Manganese (as sulfate) 1 mg, Chromium (as amino acid chelate) 16.67 mcg, Potassium (gluconate) 8.33 mg.

IN A 128 mg PROPRIETARY BLEND OF: L-Glutamine, Choline (as bitartrate), PABA, Rice Bran, Egg Lecithin, Alfalfa (leaf), L-Tyrosine, L-Glutamic Acid (as HCL), Parsley (leaf), Passion flower (herb), Inositol, Watercress (herb), Adrenal Gland, Liver FD, Beet (root), Hops flower (herb), Spleen, Eleuthero (root), Bromelain (fruit), Valerian (root), Black Cohosh (root), Pineal.

FATIGUE FREE

Long Lasting Natural Energy!

Enjoy a dynamic state of natural energy - that youthful vitality, stamina, vigor, endurance and cheerfulness! Work harder, exercise longer and feel better! **Nutrapathic FATIGUE FREE** helps balance energy flow and organ function - giving you sustained energy, enhanced physical ability, coordination, sharp reflexes, and an overall feeling of well-being - making you ready for anything! Unlike harsh stimulants that take you on a roller-coaster ride, feeling high-strung one minute and then let you down, this unique formula of vitamins, minerals, amino acids, electrolytes, herbs and greens is carefully blended to nourish and balance the body's energy flow and organ functions. Especially useful for people with chronic fatigue or moodiness.



EACH TABLET CONTAINS: Vitamin C (as ascorbic acid) 125 mg, Vitamin B12 (as cyanocobalamin) 150 mg, Calcium (as bone meal) 12 mg, Iron (as sulfate) 4 mg, Phosphorus (bone meal) 6 mg, Magnesium (as oxide) 12 mg, Zinc (as sulfate) 2 mg, Selenium (as chelate) 7 mcg, Potassium (as chloride) 10 mg.

IN A 206 mg PROPRIETARY BLEND OF: Amino Acid Blend, L-Glutamic Acid, L-Arginine, L-Alanine, Alfalfa (leaf), Sea Salt, Bromelain (fruit), Kelp (leaf), American Ginseng, Bupleurum (root), Wheat Greens, Dong Quai (root), Kidney, Chlorella (leaf), Magnolia (bark), Poria (fungus), Thymus, Wild Yam (root), Spleen, Adrenal Gland, Cyperus (root), Chaste Tree (berry), Pituitary, Rose Hips (fruit), Acerola (berry).



**Fast Acting
Long Lasting
No Stimulants**

HORMONE BALANCE

With Wild Yam & Soy Isoflavones



**Safe
Natural
Effective**

Do you suffer from low or out of balance hormones? Low energy, mood changes, or lack of concentration? Sore spots that move around – especially in the hips, buttocks, or rib cage? Are your hormone levels too high, too low, or out of balance? Estrogen and progesterone are vitally important for maintaining hormonal balance. As we age, production of both hormones decline and an imbalance can occur. Younger women can also have imbalances.

Hormones affect every cell in the body; along with the nervous system, they regulate all the work of your organs and body systems. Hormones are produced by the endocrine glands from three major sources: cholesterol, tyrosine and amino peptides. Recent medical studies have discovered that isoflavones found in soy protein are converted to biologically active hormone-like substances by intestinal micro-flora and are able to elicit an estrogen-like response in the body.

Nutrapathic HORMONE BALANCE is a safe and natural blend of these nutrients to help produce hormones – phytoestrogens from wild yam, and isoflavones from soy protein – with mucin, which provides the micro-flora to help convert them. Also included are pituitary (the master metabolic gland) and thymus (the master defense gland), and the activating herbs Sarsaparilla and Stinging Nettle. This combination provides you the most complete nutritional support to produce all the hormones – including progesterone, estrogen, and DHEA.

A 603 mg PROPRIETARY BLEND OF: Wild Yam Extract 10:1 (root), Lacta-Amino, Egg powder, Soy Protein, Mucin, L-Glutamic Acid, Nettle (leaf), Whey Protein concentrate, Sarsaparilla (root), Safflower Oil powder, Soy Protein Isoflavone Complex, RNA, DNA, Thymus, Pituitary, Barberry (bark).



FEMALE NUTRIENTS

For All Female Stages Of Life

Maintain balance & femininity! It is *not normal* for young women to experience the monthly discomforts of extreme cramping, bloating or excessive flow. Mature women should not experience the discomforts of insomnia, hot flashes, dryness, crying, depression, mood changes, or the embarrassment of increased facial hair associated with mid-life changes.

Female problems that occur during pre-menstrual, menstrual, and post-menstrual stages may be a progression of nutritional imbalances, heredity, improper diet, or even stress. Similar nutritional needs are common in all these stages of life.

Nutrapathic FEMALE NUTRIENTS is a blend of vitamins, minerals, herbs, amino acids, glandulars, and enzymes in a base of whole foods, including vitamins E and F, boron, calcium, selenium, Suma, and Ashwagandha (the primary strengthening herb used in Ayurveda) specifically designed to help nourish and balance female systems of all ages. May also be taken with **Nutrapathic HORMONE BALANCE**.

EACH TABLET CONTAINS: Vitamin A (as beta-carotene) 100 IU, Vitamin C (as magnesium ascorbate) 50 mg, Vitamin E (as d-alpha tocopherol) 12.5 IU, Niacin (as niacinamide) 10 mg, Vitamin B6 (as pyridoxine hydrochloride) 50 mg, Folic Acid 105 mcg, Pantothenic Acid (as calcium pantothenate) 30 mg, Calcium (as carbonate) 87.5 mg, Vitamin B12 (as cyanocobalamin) 25 mcg, Iron (as sulfate) 3 mg, Magnesium (as oxide) 125 mg, Zinc (as oxide) 7.5 mg, Selenium (as amino acid chelate) 50 mcg, Manganese (as sulfate) 3 mg.

IN A 482.5 mg PROPRIETARY BLEND OF: Ashwagandha (root), Suma (root), Mammery, Alfalfa (leaf), Saw Palmetto (berry), Inositol, Citrus Bioflavonoid Complex, Rutin, Soy Protein, Bee Pollen, Pancreatin 4x, Adrenal Gland, PABA, Ovary, Bromelain (pineapple), Uterus, Dong Quai (root), L-Histidine, Heart, Hawthorne (berry), Egg Lecithin (from egg yolk), Kidney, Asparagus (root), Echinacea Purpurea (root), L-Alanine, Goldenseal (root), Sarsaparilla (root), L-Carnitine, Royal Jelly 3X, Kelp (leaf), Hypothalamus, Crampbark (bark), Pulsatilla (herb), Safflower Oil, Squaw Vine (herb), Boron (amino acid chelate), Orchic Substance.

**Calm
Comfort
Composure**



BREAST NUTRIENTS

Comfort • Tone • Proportion

Maintain Healthy Breasts

There is an epidemic of breast disorders today! Many women are developing lumps or cysts in their breasts. Some have lost the tone or firmness they once had. Many are underdeveloped or over-endowed. Breast health has become the #1 women's issue today - such a huge concern that the American Medical Association recommends self-examinations and mammograms on a regular basis. Fibrocystic disease is so prevalent that it is considered a "common condition".

Nutrapathic BREAST NUTRIENTS formula is a balanced blend of nutrients to nourish and maintain healthy breast tissue. This unique formula contains Chondroitin Sulfate to help inhibit inflammation and calcium deposits, lymph and thymus to assist in cleansing the system, collagen for suppleness, lactalbumin protein, isoflavones and pituitary substance for hormones, and Sarsaparilla for hormone balance. Recent medical studies have discovered that isoflavones found in soy protein are converted to biologically active hormone-like substances by intestinal micro-flora, and are able to elicit an estrogen-like response in the body.

EACH TABLET CONTAINS: Selenium (as amino acid chelate) 60 mcg, Chromium (as yeast) 50 mcg.

IN A 223 mg PROPRIETARY BLEND OF: Mammery, Lactalbumin Protein, Collagen, Soy Protein Isoflavone Complex, Lymph, Kelp (leaf), L-Leucine, L-Arginine, L-Glutamic



POST-MENOPAUSE

*Bone Builder & Hormone Balance
With Wild Yam & Soy Isoflavones*

Balance Hormones & Build Strong Healthy Bones

As women mature, many lose the ability to utilize calcium properly. Taking large doses of calcium daily doesn't always help. Hormones must be "balanced" first – along with the right amount of nutrients which aid in the digestion and usage of calcium. Our bodies just need to be working properly to be able to break down calcium and absorb it as we did when we were younger. Excess calcium from mega-doses may be stored in the kidneys, gallbladder, or form on blood vessel walls – resulting in kidney stones, gall stones, and clogged arteries.

Nutrapathic POST MENOPAUSE BONE BUILDER & HORMONE BALANCE supplies the proper amount of calcium and the nutrients that enable your body to utilize it! This balanced blend provides those nutrients your body needs to bring it into "harmony". Includes magnesium, Glutamic acid HCL, soy protein (source of isoflavones), wild yam (source of phytoestrogens) for hormone balance, and collagen, the substance that holds calcium in the bones.

EACH TABLET CONTAINS: Calcium (as egg shell) 50 mg, Magnesium (as amino acid, carbonate, oxide) 100 mg, Collagen (chicken) 45 mg, Lactalbumin Digest 38 mg, Soy Protein Digest 38 mg, Wild Yam Extract (6% saponins) 50 mg.

IN A 33 mg PROPRIETARY BLEND OF: Mucin, Safflower Oil, Horsetail (herb), Glutamic Acid HCL, Pituitary, Thymus.



MALE FORMULA

Male System Support

SAW PALMETTO • ZINC • PUMPKIN SEEDS

Due to the pressures of the modern world, poor eating habits and excess stress, men of all ages can benefit from nutritional support to maintain healthy prostates, male systems, vitality, drive and performance that they enjoyed in their youth. It is not normal to have swelling, pressure, diminished drive and circulation, or problems voiding the bladder.

Nutrapathic MALE FORMULA is a balanced blend of nutrients – including vitamin E, zinc, selenium, Saw Palmetto, pumpkin seeds, and Ashwagandha (the primary strengthening herb used in Ayurveda) designed to supply specific nutritional support to the male system.

EACH TABLET CONTAINS: Vitamin C (as magnesium ascorbate) 25 mg, Vitamin E (d-alpha tocopherol) 12.5 IU, Thiamin (as thiamin hcl) 7.5 mg, Riboflavin 5 mg, Niacin (as niacinamide) 10 mg, Vitamin B6 (as pyridoxine hcl) 37.5 mg, Folic Acid 50 mcg, Vitamin B12 (as cyanocobalamin) 37.5 mcg, Pantothenic Acid (as calcium pantothenate) 30 mg, Magnesium (as amino acid chelate) 87.5 mg, Zinc (as zinc oxide) 25 mg, Selenium (as amino acid chelate) 50 mcg, Manganese (as sulfate) 12.5 mg.



IN A 367.5 mg PROPRIETARY BLEND OF: Inositol, Citrus Bioflavonoid Complex, Ashwagandha (root), Orchic Substance, Prostate, Pumpkin (seed), Saw Palmetto (berry), Pancreatin 4x, Heart, L-Histidine, Bee Pollen, Alfalfa (leaf), Adrenal Gland, American Ginseng (root), Bromelain Pineapple, Dong Quai (root), Sarsaparilla (root), Wild Yam (root), Hawthorne (berry), Amino Blend (from whey protein), Egg Lecithin (from egg yolk), Kidney, L-Alanine, Echinacea Purpurea (root), Goldenseal (root), L-Carnitine, Kelp (leaf), Hypothalamus, Royal Jelly concentrate 3X, Pulsatilla (herb).

BONE • HAIR • SKIN • NAILS

*Calcium-Collagen Complex
With a food form of Calcium from Bone Meal*

In order to maintain that youthful look, the proper nutrition must be supplied. Calcium is the most abundant mineral in the body and is necessary for the formation and maintenance of strong bones, teeth and soft tissues - including skin, tendons and cartilage. A well balanced diet normally supplies adequate amounts of calcium; however, our bodies seem to have an inability to digest and use it properly as we grow older. This formula supplies the calcium you need and is designed to help the body utilize the calcium from your diet and maintain the calcium already in your body.

Collagen is a protein and is the main organic constituent of the connective tissue that holds calcium in the bones. It also makes up most of the connective tissue in the skin, tendons, hair and nails, and is necessary for internal lubrication. As we age, our bodies lose the ability to produce collagen - causing lines, wrinkles and saggy skin. **Nutrapathic BONE • HAIR • SKIN • NAILS** is designed to help the body utilize the calcium from your diet and maintain the calcium already in the body.

This complete formula is a blend of nutrients for the bones, hair, skin and nails, and includes magnesium, vitamin D, phosphorus and boron as co-factors for maximum utilization - plus the missing link "Collagen" that is the protein which forms the main constituents of connective tissue that holds calcium in bones, hair, skin and nails.

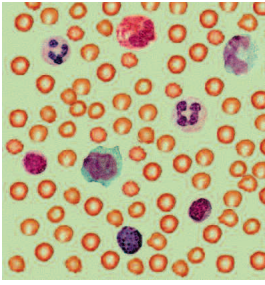
EACH TABLET CONTAINS: Vitamin A (Beta Carotene) 70 IU, Vitamin C (as Magnesium Ascorbate) 105 mg, Vitamin D (as Cholecalciferol) 35 IU, Vitamin E (d-alpha tocopherol) 10 IU, Vitamin B12 (as Cyanocobalamin) 16 mcg, Calcium (as Eggshell and as Bone Meal) 150 mg, Iron (as Gluconate) 3 mg, Phosphorous (Bone Meal) 50 mg, Magnesium (as Oxide and Amino Acid Chelate) 300 mg, Zinc (as Zinc Gluconate) 3 mg, Selenium (as Amino Acid Chelate) 20 mcg, Copper (as Amino Acid Chelate) 0.8 mg, Manganese (as Amino Acid Chelate) 1 mg.

IN A 229 mg PROPRIETARY BLEND OF: Collagen, Wheat Greens, Glutamic Acid HCL, Spirulina, DL-Methionine, Calcium Sulfate (Gypsum), Irish Moss, L-Ornithine (HCL), Saw Palmetto (berries), Bee Pollen, Linoleic Acid (Safflower Oil), Boron (as Amino Acid Chelate), Silica (as Horsetail Extract).

**No Need To Megadose If You Utilize
Calcium From The Food You Eat!**

SUPER ANTIOXIDANT

Visible signs of aging and various illnesses associated with the aging process have been linked to free radical cells in the body.



Excessive fats and oils in the diet and pollutants in the environment create these renegade cells which attack healthy cells by a process called oxidation. Antioxidants are those nutrients which seek out and rid the body of free radicals.

Nutrapathic SUPER ANTIOXIDANT is a complete formula containing vitamins A, beta carotene, C, E, selenium, S.O.D., and zinc; plus ascorbyl palmitate (the fat soluble form of vitamin C), the whole foods spirulina, carrot powder, and red seaweed which are naturally rich in antioxidants and nutrients to nourish the systems of the body that produce antioxidants.

EACH TABLET CONTAINS: Vitamin A (acetate, Beta-Carotene) 5350 IU, Vitamin C (Ascorbic Acid and Ascorbyl Palmitate) 210 mg, Vitamin C (Ascorbic Acid) 200 mg, Vitamin C (Ascorbyl Palmitate) 10 mg, Rose Hips 1 mg, Vitamin E (as D-Alpha Tocopherol) 25 IU, Selenium (as AAC) 13 mcg, Zinc (Zinc Picolinate) 1.5 mg, Manganese (Manganese AAC) 3.5 mg, Magnesium (Aspartate) 6.5 mg.

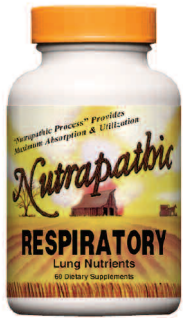


IN A 68.13 mg PROPRIETARY BLEND OF: Spirulina (algae), Carrot (root), Superoxide Dismutase, Red Seaweed (leaf), Silymarin (Milk Thistle), L-Glutamic Acid, Gastric Mucin, Liver FD, DL-Methionine, L-Glutathione, Acerola (Berry).

RESPIRATORY

Lung Nutrients

Many people suffer from diminished function of their lungs from a sedentary life-style, smoking, and pollutants in the air.



Bronchitis, emphysema, pneumonia, colds, and allergies can cause the lungs to become congested, increasing the need for nutrition. Lungs can lose their elasticity, spasm, or accumulate large amounts of phlegm and mucus that can leave a person weak, sluggish and short of breath from reduced oxygen supply.

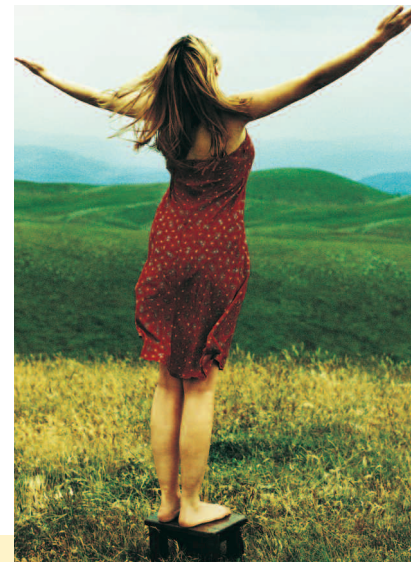
The function of the lungs is to take in oxygen and remove carbon dioxide. Oxygen is the most abundant and important element of the body-it is essential to maintain life. Oxygen reacts with all other nutrients in the mitochondria (microscopic filaments that are the source of energy within cells which contains enzymes, ATP, and DNA) to produce life-giving energy in the cells and creating utilization in the tissues and the giving off of carbon dioxide.

Nutrapathic RESPIRATORY is a natural combination of nutrients for the lungs - including Tylophora Asthmatica (chief Ayurvedic herb), and Euphorbia (a major Chinese herb), with other supporting herbs, and the antioxidants vitamin A, C, and selenium, plus collagen for its ability to maintain elasticity - all to give you the most complete nutritional support available for the lungs.

EACH TABLET CONTAINS: Vitamin A (as palmitate) 500 IU, Vitamin C (as ascorbic acid) 150 mg, Bromelain (pineapple) 35 mg, Collagen (chicken type II) 30mg, Pinellia Rhizome (pinellia ternata) 25 mg, Tylophora Asthmatica Extract 25 mg, Pancreatin 4X 20 mg, Citrus Bioflavonoids 15 mg, Kelp (leaf) 15 mg, Euphorbia (Euphorbia Pilullifera Rupr.) 10 mg, Licorice Root 10 mg, Selenium (selenomethionine 5%) 120 mcg.

IN A 91 mg PROPRIETARY BLEND OF: Rice Bran, Adrenal, Wheat Greens, L-Ornithine (as L-ornithine HCL), L-Lysine, Lung Tissue, Bupleurum Root, Mullein.

**Healthy Lungs Increase
Stamina, Strength and Endurance!**



COLD • SINUS & ALLERGY SEASON

Reduce Phlegm & Mucus

A must for all seasons! A difference you will feel! This powerful formula is designed to nourish and balance all the systems effected when excess phlegm and mucus are present such as runny nose, itchy eyes, post nasal drip, and congestion in the lungs and colon.

Nutrapathic COLD • SINUS & ALLERGY SEASON is an herbal blend powered with vitamins A, pantothenic acid, F, and C, with all their known cofactors; plus a blend of minerals, glandulars, enzymes, bee propolis, and spirulina for maximum results. Vitamin C is an essential part of this formula because the body cannot synthesize vitamin C, it must be provided daily in the diet. It is an antioxidant which fight injurious free radicals, strengthens the defense system, helps control phlegm and mucus, and assists healing. Stress, high fevers, antibiotics, aspirin, cortisone and tobacco affect the levels of vitamin C in the body.

**No Drowsiness or
Dried Out Feeling**

EACH TABLET CONTAINS: Vitamin A (as beta-carotene) 4000 IU, Vitamin C (as ascorbic acid) 500 mg, Pantothenic Acid (as calcium pantothenate) 20 mg, Calcium (as carbonate) 10 mg, Magnesium (as carbonate) 10 mg, Zinc (as amino acid chelate) 20 mg.

IN A 371 mg PROPRIETARY BLEND OF: Citrus Bioflavonoid Complex, Rutin, Hesperidin Complex, Liver, Thyme (leaf), Slippery Elm, Spirulina, Bee Propolis, Wheat Germ, Nettle (leaf), Chymotrypsin Complex, Pancreatin 4 X, Mullein (leaf), Rose Hips (fruit), Acerola (berry), Kelp (leaf), Hops (flower), Lymph, Thymus, Lung, Safflower Oil.



G.O.U.T.

Greater Overall Urinary Tract

Are you stressing your urinary tract? People who drink excessive amounts of coffee, soda, alcohol or eat a high protein diet stress their urinary system, reducing the body's ability to remove urea, uric acid, ammonia and other toxins from the blood stream. They often experience lower back pain, frequent urination and a burning sensation, or even joint pain - especially the big toe or knees.

Nutrapathic G.O.U.T. is a blend of vitamins, including B-6 and pantothenic acid, minerals, amino acids, herbs (including black cherry and watermelon seeds), enzymes, glandulars and whole foods that are designed to restore normal function of the urinary tract.

EACH TABLET CONTAINS: Riboflavin 12.5 mg, Vitamin B6 (as Pyridoxine HCL) 25 mg, Folic Acid 150 mcg, Pantothenic Acid (as Calcium Pantothenate) 50 mg, Zinc (as Picolinate) 2.5 mg, Manganese (as Chelate) 5 mg.

IN A 133 mg PROPRIETARY BLEND OF: Kidney, Tinospora Cordifolia (stem), Liver FD, Bromelain, Boldo (leaf), Alpha Ketoglutaric Acid, Trypsin, L-Arginine, Watermelon (seed), Black Cherry Concentrate, Papain, L-Ornithine, Pancreatin 4x.

Joint & Back Pain Burning & Itching



RESTORE

Cellular Nutrition

Are you taking larger and larger doses of the vitamins and minerals and other supplements you need, but not getting the desired results? Have pollutants, preservatives, prescription drugs and over-processed foods diminished or destroyed your internal eco-system of friendly flora, enzymes, hormones, and trace minerals - leaving you tired, sluggish, and susceptible to everything that is going around?

Nutrapathic RESTORE is designed to replenish these essential building blocks to your internal eco-system. This innovative formula includes acidophilus for friendly bacteria, aloe vera for enzymes, soy protein and wild yam for hormones, kelp and barley green for minerals and trace nutrients, Embelia Ribes for parasites, and other herbs for digestion and detoxification to help restore your eco-system back to normal.

A 353 mg PROPRIETARY BLEND OF: Soy Protein, Tinospora Cordifolia Extract 4:1 (stem), Kelp (leaf), Wild Yam (root), Barley Greens, Lactobacillus Acidophilus, Embelia Ribes Extract (Standardized 5% Embelia), Gentian (root), Orange (peel), Aloe Vera, RNA, Nettle (herb), DNA, Pituitary.

Restore Cellular Vitality



I.B.S.

Intestinal Balancing Supplement

Health begins in the digestive tract! High levels of stress, a diet low in fiber, high in fat and sugar, and poor eating habits have caused an epidemic level of lower intestinal tract problems. Irritable bowel syndrome (IBS) is the most common digestive disorder seen by physicians. In IBS, the normally rhythmic muscular contractions of the digestive tract become irregular, interfering with the normal movement of food and waste and leads to growth of mucus and toxins in the intestines. Symptoms of IBS may include constipation and/or diarrhea (often alternating), abdominal pain, mucus in the stools, nausea, flatulence, bloating, anorexia and intolerance to certain foods. Pain is often triggered by eating, and may be relieved by a bowel movement. This disorder is also sometimes called intestinal neurosis, mucous colitis, spastic colitis, or spastic colon.

Nutrapathic I.B.S. is designed to supply these specific nutrients on a daily basis, providing nutrients to digest protein, replace minerals & trace elements, soothe, reduce inflammation, and increase elasticity. The formula contains rice bran to help soothe the intestinal tract, Boswellia Serrata to reduce inflammation and increase blood flow, and enzymes to aid digestion. Also includes Bismuth - a necessary mineral for the intestines, N-Acetyl Glucosamine - a major constituent of the intestinal lining and of the barrier layer that protects the intestinal lining from excessive digestive enzymes and other potentially damaging intestinal contents.

EACH TABLET CONTAINS: Vitamin A (as beta carotene) 1000 iu, Vitamin C (as ascorbic acid) 45 mg, Thiamin (as mononitrate) 2 mg, Riboflavin 2 mg, Niacin (as niacinamide) 2 mg, Vitamin B6 (as pyridoxine hcl) 2 mg, Pantothenic Acid (as calcium pantothenate) 2 mg, Calcium (as lactate) 50 mg, Iodine (from kelp) 5 mcg, Magnesium (as sulfate) 102 mg, Copper (as amino acid chelate) 2 mg.

IN A 202.25 mg PROPRIETARY BLEND OF: Citrus Bioflavonoids, Collagen, Bromelain (fruit), Papain, Wheat Grass (herb), Boswellin extract (gum), Rice Bran, Aloe Vera Extract 4:1, Trace Mineral Blend, Pancreatin 4X, Kelp (leaf), Lymph, Amino Acid Blend, N-Acetyl Glucosamine, Nettle (herb), Thyme (leaf), L-Glutamic Acid (as HCL), Bee Propolis, Bismuth Salicylate, Chymotrypsin.



VISIONARY

As we grow older the strain we put on our eyes from artificial light, television, computer screens, and a poor diet begins to take its toll on our eyes. Impaired vision is one of the most common problems today. Some people are bothered by light, have foggy vision, can't see close-up, far away, or in the dark. The lens of the eye loses its ability to focus or adjust for distance, the retina's ability to adjust to changes in light lessens, and eyes become tired more quickly, increasing the need for eye nutrients. Start now-give your eyes the support they need.



Eye Nutrients

Nutrapathic VISIONARY is a blend of vitamins, minerals, herbs, and glandulars designed to provide the most complete support for the eyes. Some of the key nutrients are Beta Carotene, multicarotene (a blend of carotenes), Bilberry - to help improve blood supply to the eyes, and Wolfberry - which is reported to help nourish the blood and to strengthen and brighten the eyes. Boswellia and Rue to help nourish capillaries, vessels, and to promote flexibility.

EACH TABLET CONTAINS: Vitamin A (as beta-carotene and betatene) 4100 IU, Vitamin C (ascorbic acid) 200 mg, Riboflavin 10 mg, Niacin (as niacinamide) 20 mg, Vitamin B12 (as cyanocobalamin) 20 mcg, Selenium (as L-selenomethionine) 12 mcg.

IN A 122.5 mg PROPRIETARY BLEND OF: Rutin, Lycium (berry), Terminalia Belerica (fruit), Kelp (leaf), Lutein, Boswellia Serrata (leaf), Kidney, Liver, Inositol, Pancreatin, Psyllium (seed), Dandelion (root), Bupleurum (root), Uva Ursi (leaf), Celandine (herb), Bilberry (fruit), Taurine, Licorice (root), Brain, L-Glutathione, Rue (herb).

MOBILITY

With Boswellia & Mucopolysaccharides

Many Americans suffer with painful or restricted mobility in the joints and muscles from the extra demands of an active life of sports, exercising, body building, or from years of normal use. Proper nutrition can assist in increased mobility of the joints and muscles.

Nutrapathic MOBILITY is a synergistic combination designed to be digested, absorbed and utilized rapidly and completely as a food source for the joints, muscles, cartilage and ligaments. This special complex contains vitamins, minerals, amino acids, enzymes and whole foods including: Boswellia Seratta-the chief herb used for mobility and flexibility in Ayurveda, the ancient system of Indian medicine. Quercetin - a bioflavonoid derived from blue green algae. Collagen (chicken) - a protein which is the main constituent of connective tissue. Chondroitin Sulfate A - one of the three main constituents of connective tissue which promotes elasticity and a cushioning effect in ligaments, cartilage and tendons.



**Joints
Muscles
Ligaments**

EACH TABLET CONTAINS: Vitamin C (as ascorbic acid) 75 mg, Vitamin B2 (as riboflavin) 7.5 mg, Niacin (as niacinamide) 20 mg, Vitamin B6 (as pyridoxine hydrochloride) 15 mg, Vitamin B12 (as cyanocobalamin) 15 mcg, Pantothenic Acid (as calcium pantothenate) 50 mg, Manganese (as manganese sulfate) 2 mg.

IN A 318.5 mg PROPRIETARY BLEND OF: Boswellia Serrata Extract (standardized 65% Boswellic acid) (herb), Collagen (chicken), Quercetin, Spirulina (algae), Bromelain, Sulfur, PABA, Chondroitin Sulfate, Glucosamine (as Sulfate), Alfalfa (leaf), Garlic (bulb), L-Cystine, Papain (papaya), Horsetail Extract (standardized 7% Silica).



SUPER FAT METABOLIZER

No Special Diet • No Calorie Counting • No Restricted Lifestyle

Are you tired of special diets and counting calories? There's no magic pill when it comes to weight loss, but **Nutrapathic SUPER FAT METABOLIZER** is a totally unique formula designed to nourish and balance the fat and sugar regulating systems of the body, which help to burn off fat and curb cravings for fat and sugar effortlessly-without the use of stimulants or suppressants. It can also maximize any weight loss program to help reach your goal much faster and easier! It promotes healthy weight loss gently and naturally.



Nutrapathic SUPER FAT METABOLIZER contains a special compound called Bitter Melon (Momordica charantia). It is a common vegetable that is eaten by literally billions of people, and is used in China and Indian Ayurvedic medicine for its ability to balance sugar or blood glucose levels. It helps eliminate cravings and helps to utilize sugar over a longer period of time so that a person has abundant energy-without cravings.

We have added psyllium seeds for their protein, fatty acids and bulking content, and soy germ because it has the highest level of isoflavones available in any product. Research indicates that soy appears to significantly lower serum cholesterol levels and selectively decreases LDL (low-density cholesterol) levels without affecting the good HDL (high-density cholesterol) levels. Isoflavones also help to balance hormones. Many people - both males and females - gain weight from hormone imbalances. Soy germ also contains tocopherols and fatty acids, which balance out the effects of saturated fats and allow you to break them down to get the proper usage without having them form on the walls of your veins and arteries.

This unique formula also includes fiber-rich rice bran and lentil, activating vitamins, glandulars, amino acids and important minerals (including GTF Chromium) - plus digestive enzymes, in a natural base of energizing and supporting herbs that help to nourish and balance the fat and sugar regulating systems of the body.

Nutrapathic SUPER FAT METABOLIZER contains no ephedrine, ma huang, caffeine, or any other strong stimulants. The key factor is the addition of the fatty acids, vitamin F, soy germ flour, psyllium seeds and this wonderful Bitter Melon that balances out sugar.

EACH TABLET CONTAINS: Vitamin A (as beta-carotene) 37.5 IU, Vitamin E (as d-alpha tocopherol) 45 IU, Niacin (as niacinamide) 50 mg, Vitamin B6 (pyridoxine hydrochloride) 6 mg, Biotin 75 mcg (as d-biotin), Pantothenic Acid (as calcium pantothenate) 25 mg, Iodine (from kelp) 30 mcg, Zinc (as gluconate) 6 mg, Selenium (as amino acid chelate) 50 mcg, Chromium (as amino acid chelate-GTF) 50 mcg, Molybdenum (as amino acid chelate) 75 mcg.

IN A 690.63 mg PROPRIETARY BLEND OF: Choline Bitartrate, Rice Bran, Soy Germ, Lentil (bean), Inositol, Psyllium Husk (seed), DL-Methionine, Momordica (fruit), Milk Thistle powdered (seed), Lemon Juice Concentrate (fruit), Lipase, Ox Bile Extract, L-Tyrosine, Cayenne Pepper (fruit), Alfalfa (leaf), Liver, Papain (papaya), Lymph, Pancreas, Celandine (root), Bromelain (pineapple), Chondroitin Sulfate A, L-Glutathione, Dandelion (root), Beet (leaf), Garlic (bulb), Wheat (greens), Stomach, Uva Ursi (leaf), Eleuthero (root), Chicory (root), Pituitary.



HERBAL SOOTHING GEL

Deep Penetrating Action For Muscles & Soft Skin

Nutrapathic HERBAL SOOTHING GEL is a new greaseless gel that is good for almost any skin or muscle needs. This "all natural" herbal gel is designed to help obtain and maintain soft supple skin that our harsh environment and time tends to destroy, and soothe stiff, sore and achy muscles that result from the stresses of everyday life – especially tension and physical activities.

Nutrapathic HERBAL SOOTHING GEL is a natural gel made with Nigella Sativa (an ancient Ayurvedic herb) used for centuries to maintain vibrant skin, reduce swelling, a local anesthetic, and for its soothing effect. The Nigella Sativa is activated by a special herbal blend designed to maximize its effects and allow it to penetrate deep into the muscles, ligaments, tendons and joints.

The dual-action of **Nutrapathic HERBAL SOOTHING GEL** is great for the skin and for all the soft tissues below the skin. Massage it in for penetrating relief of aches, pains, sore and stiff muscles, or gently apply for soft supple skin.

Contains purified water, herbal blend, carbopol 934-P NF, Jojoba oil, sodium benzoate NF, Tween 80 NF, wheat germ oil, linolenic acid, sodium methylparaben BP, sodium propylparaben BP, dimethicone copolyol, magnesium sulfate, nigella sativa.



Deep Penetrating Action

CARDIO-POWER

Strengthen, stimulate and balance vital organs! Maintaining a healthy circulatory system requires specific nutrients for the heart, valves and muscles, plus support for the veins and arteries to keep them clean and elastic, insuring proper blood flow throughout the entire body to remove stress on the heart. It is essential to nourish the other organs in the system, such as the lungs to insure high levels of oxygen.

**Heart
Veins
Arteries**

The power comes from the unique selection of herbs and nutrients like Co-enzyme Q10. This vital co-enzyme provides the spark of life at the cellular level, energizing the mitochondria. The heart has the most mitochondria of any muscle in the body, which means it also has the highest levels of Co-enzyme Q10. The amino acid L-Carnitine promotes cellular energy too, and carries fatty acids into the mitochondria where they are converted into energy. The formula also contains herbs like Hawthorn Berries and Ginkgo, minerals and digestive aids - all combined to make this a powerful formula.

lar level, energizing the mitochondria. The heart has the most mitochondria of any muscle in the body, which means it also has the highest levels of Co-enzyme Q10. The amino acid L-Carnitine promotes cellular energy too, and carries fatty acids into the mitochondria where they are converted into energy. The formula also contains herbs like Hawthorn Berries and Ginkgo, minerals and digestive aids - all combined to make this a powerful formula.

EACH TABLET CONTAINS: Vitamin C (as ascorbic acid) 30 mg, Vitamin E (as d-alpha tocopherol 15 IU, Vitamin K (as phytonadione) 67 mcg, Niacin (as niacinamide) 10 mg, Vitamin B6 (as pyridoxine HCL) 20 mg, Pantothenic Acid (as calcium pantothenate) 20 mg, Calcium (as calcium carbonate) 30 mg, Magnesium (as oxide) 60 mg, Selenium (as amino acid chelate) 30 mcg, Manganese (as sulfate) 2 mg, Chromium (as picolinate) 13.3 mcg.

IN A 264.71 mg PROPRIETARY BLEND OF: Hawthorne (berry), Wheat Germ, Red Seaweed (Dulse) (leaf), Pancreatin 4X, Lecithin, American Ginseng (root), Heart, Cream of Tartar, Cayenne (fruit), Motherwort (herb), Soy Protein, Adrenal Gland, Lung, Ginkgo Biloba (leaf), Chondroitin Sulfate A, Bentonite, Inositol, Safflower Oil, Liver, Whey, Pongania Glabra, L-Carnitine, Taurine, Thymus, Sida Cordifolia (herb), Co-enzyme Q10, Pituitary (porcine), Rose Hips (fruit), Acerola powdered (berry).

SWEET DREAMS

FAST • EFFECTIVE • ALL NATURAL

For instant relief and long term help! The body uses specific nutrients at night. Sleeplessness is not a condition that starts at bedtime - it is an irregularity in the brain cycles. In the natural sleep cycle, the body is in a deep, natural sleep—including the REM cycle, allowing a person to wake up rested and alert—not a tired and drowsy feeling caused by most other sleep products. A good sleep aid will not only help you sleep, but will nourish the brain to re-establish the natural cycles.

Nutrapathic SWEET DREAMS is a special formula blended of ancient Ayurvedic herbs (including Wild Lettuce, Long Pepper and Ashwagandha) for sleep, plus a blend of vitamins, minerals, amino acids, and glandulars designed to promote a restful and natural sleep and to nourish the brain. Get relief immediately from those sleepless nights!

EACH TABLET CONTAINS: Vitamin C (as Calcium Ascorbate, Magnesium Ascorbate, Zinc Ascorbate) 62 mg, Niacin (as Niacinamide) 10 mg, Vitamin B6 (as Pyridoxine HCL) 40 mg, Calcium (as Ascorbate) 10 mg, Magnesium (as Ascorbate) 10 mg, Zinc (as Ascorbate) 5 mg.

IN A 364 mg PROPRIETARY BLEND OF: Ashwagandha (root), L-Glutamic Acid HCL, Wild Lettuce (leaf), Brain, L-Taurine, Whey, Soy Protein, Barley Green, Bromelain, Pepsin, Long Pepper.

Wake Up Rested And Alert!

BIO-MAGNETIC ENERGY DROPS

Give Your Cells a Jump-start!

The human body is not only a carbon base unit made up of minerals, protein, fat, water and chemical reactions, it's also a complex of energies and frequencies, which include brain impulses and frequencies in the nervous system that control the body, energy that flows in the meridians and chakras (points used in acupuncture), electrons in every atom of the body, and bio-magnetic energy in every cell. The body cannot function without its electrical components. The most critical energy in the body is the "Bio-Magnetic" energy, the most basic element of life and possibly the most important - without it nothing happens. When the bio-electric flow is increased, the cells release toxins and metals - allowing healthy energy to flow again.

Nutrapathic Bio-Magnetic Drops is a blend of herbal tinctures using the Paracelsus (the father of modern medicine and pharmacology) method, which includes the cell salts of the herbs and is activated by the sun. The blend is then activated by a special process to create bio-magnetic activity in the cells at a multitude of frequencies. This is the first formula to work with all of the electrical systems. It is designed to remove toxins and heavy metals, create a proper charge in each system, and to maintain a perfect balance between all of the systems.

A 28 mg proprietary blend of alcohol extracts of Stinging Nettle (root), Milk Thistle (seed), Poria Cocos (fruit), Chaste Berry (fruit), Bitter Melon (fruit), Isolated Soy Protein, Kelp (whole), Wild Yam (root), Barley (stem & leaf), Aloe Vera (leaf), Sea Salt.

Help Your Cells Work Better!



The Supplements You've Grown To Trust Since 1987!

*Ask about our Agricultural Product Line
for Conventional, Sustainable & Organic Farming*

Statements in this brochure have not been evaluated by the Food and Drug Administration. These products are not intended to diagnose, treat, cure or prevent any disease.

(314) 892-0988 • (800)747-1601 • Fax: (314)892-1662

www.nutrapathic.com • email: info@nutrapathic.com

FULL LINE VITAMIN BROCHURE

Parametric Associates, Inc.

10934 Lin-Valle Drive
St. Louis, Missouri 63123